

Arg-e Bam and the « thousands cities of Bactria »



Michael Jung – Museo delle Civiltà/Rome

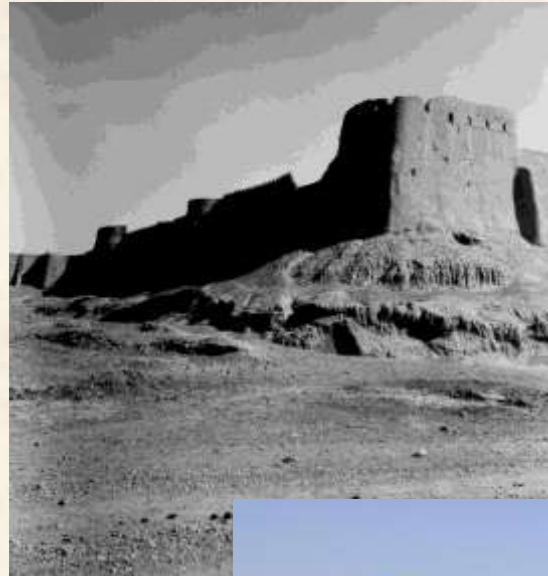
Vincenzo Torrieri - Soprintendenza Archeologia, Belli Arti e Paesaggio per l'Abruzzo

Arg-e Bam geographical position





Earthquake 2003



Tower n° 1
1965 and after
the earthquake





The bastion n° 46
before the excavation



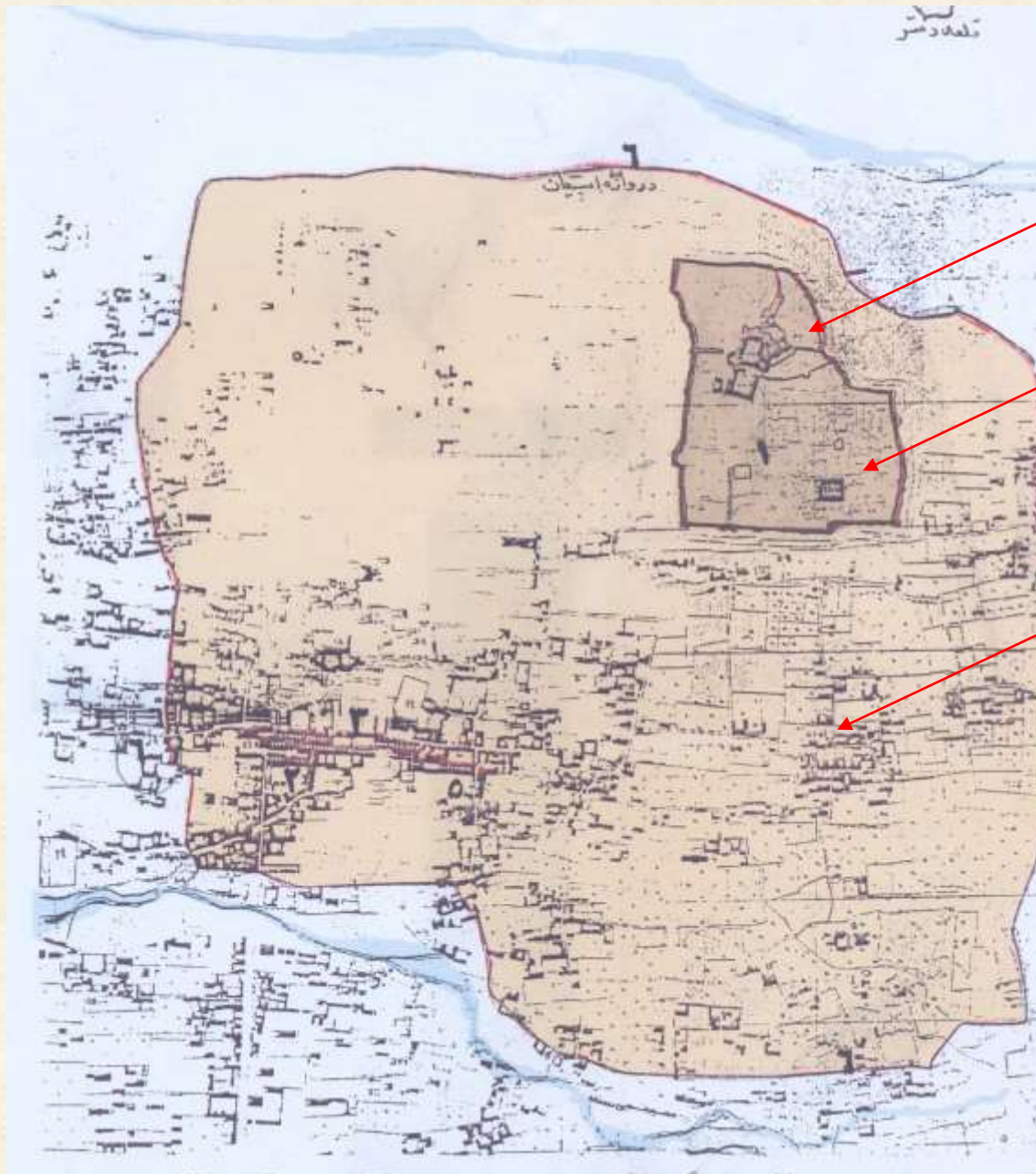


Tower n° 46



(C) DigitalGlobe

Western
bastion



كوردوبا
قórdoba

دروازه اسپانیا

Arg

Sharistan

Rabad



Shards with short Greek inscriptions discovered in Afraz, 25km south of Arg-e Bam



Tower n° 46

Presumed East gate

Presumed ancient SE tower



Darabgird

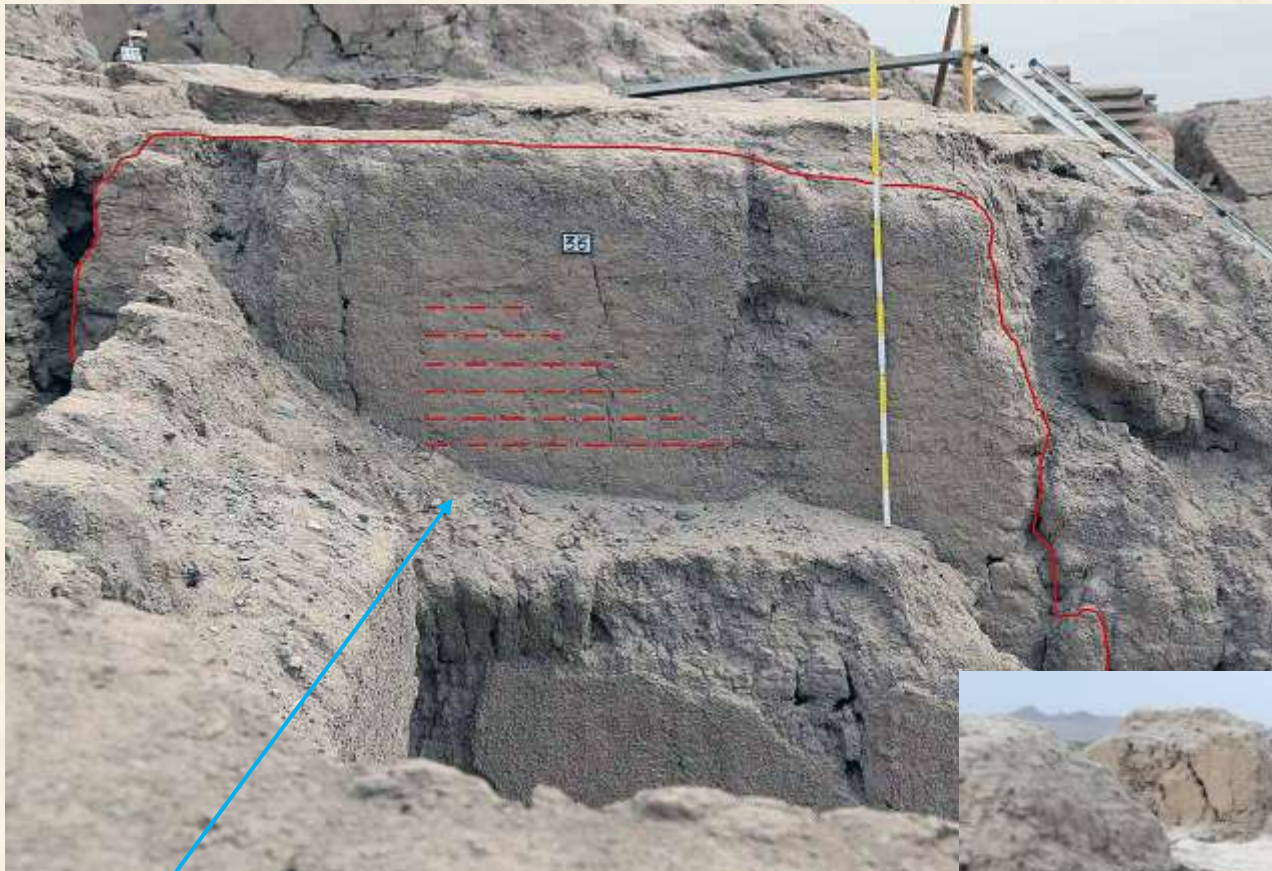


Firuzabad

Plan of excavation



Round tower, north and south wing of gate

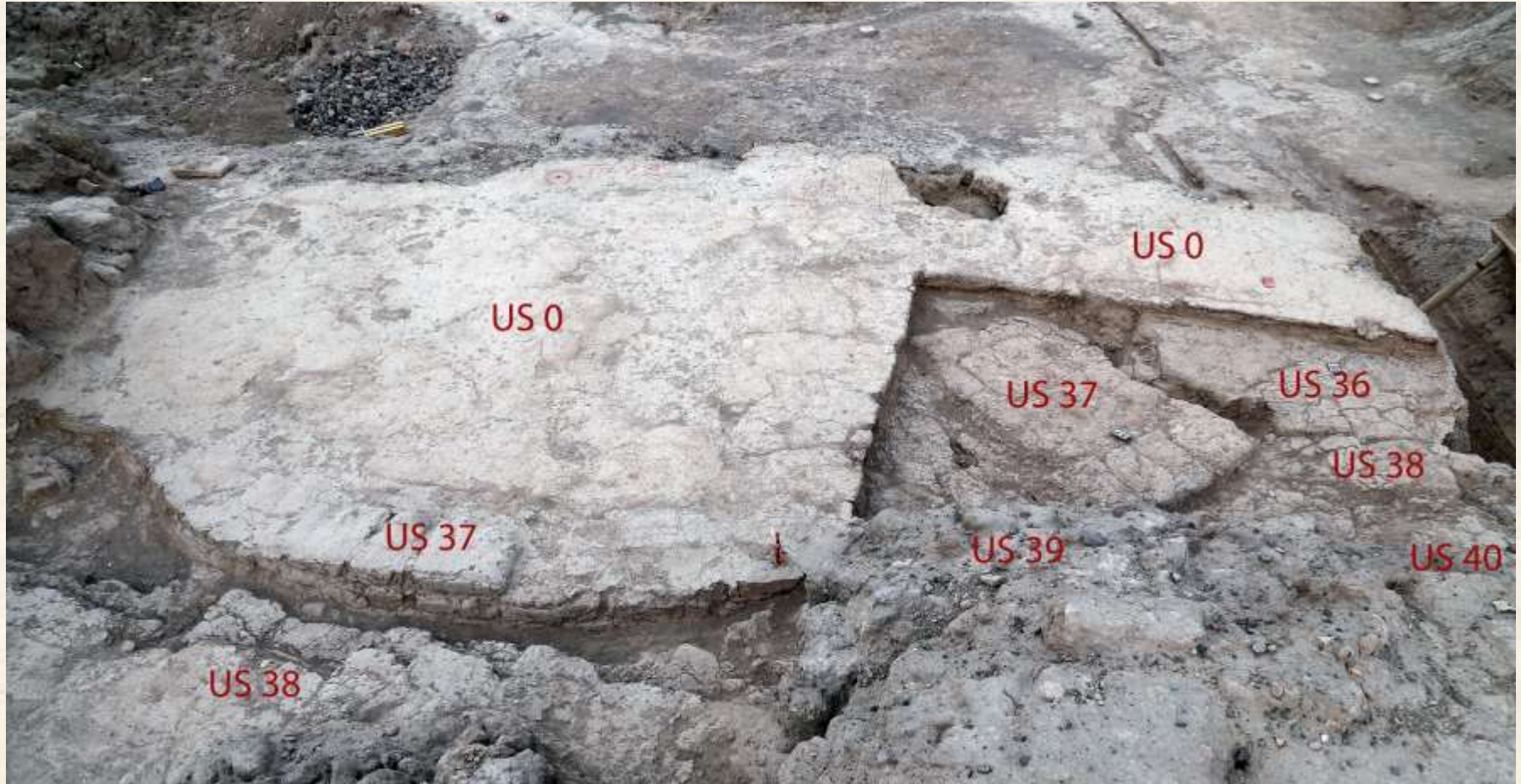


Northern wing of city gate, US 36



Southern wing of City Gate, US 42





Pre-existing tower, US 37

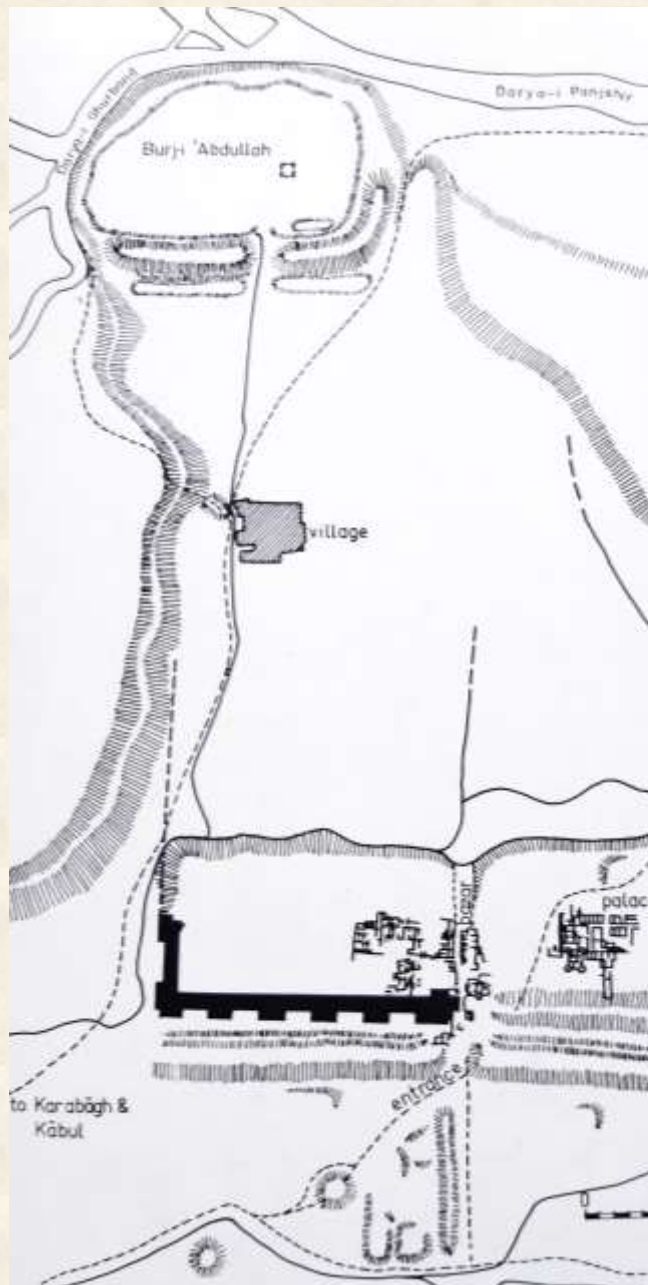
Northern wing of City Gate, US 36



The City Gate and the tower

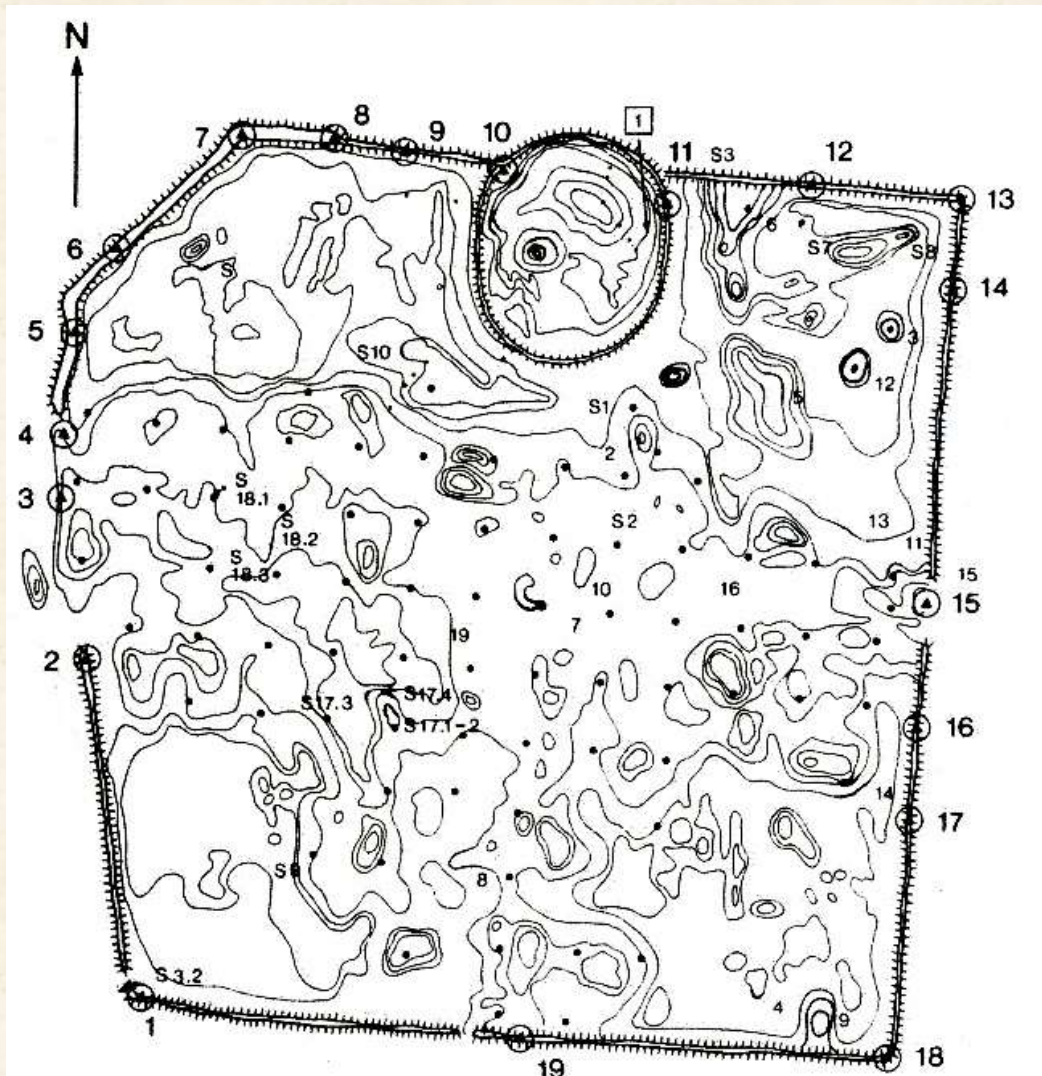


Herat, the city plan goes back possibly to a Greek-Bactrian foundation

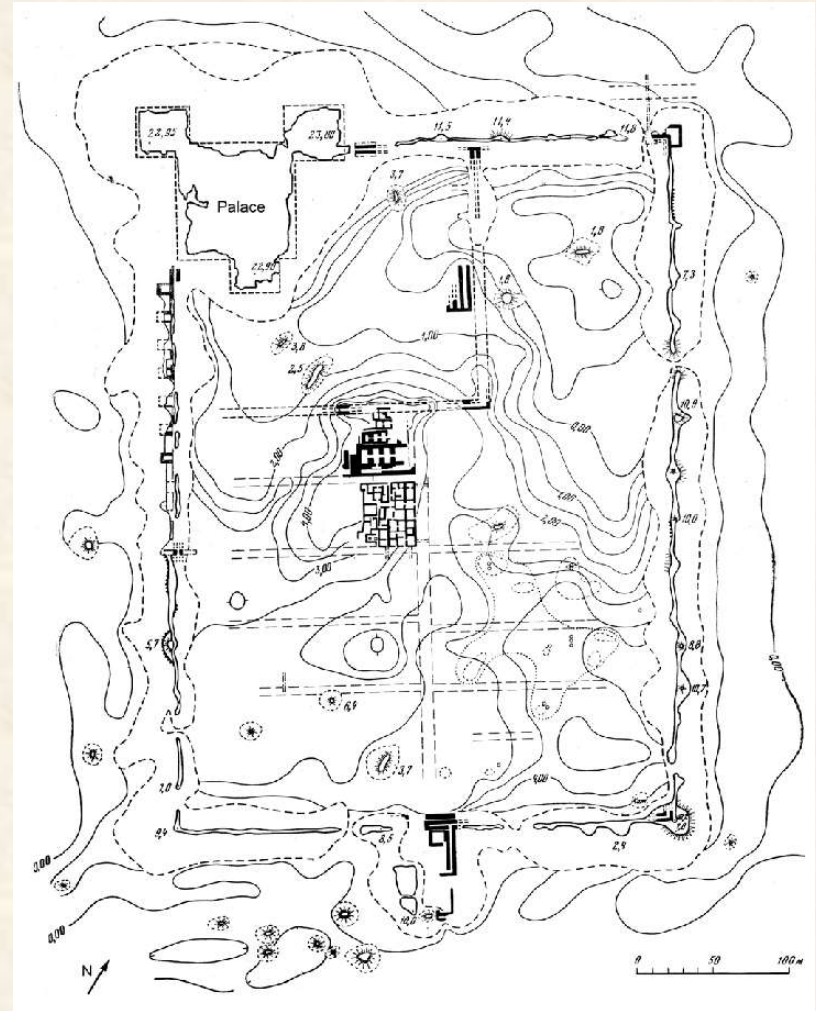


Aerial view of Begram in 1939. Photo: Jean Carl. Collection: Musée Guimet, Paris. All rights reserved.

Begram



Merv, the round citadel built in Achaemenid period, the rectangle layout of Gyaur Kala of hellenistic design



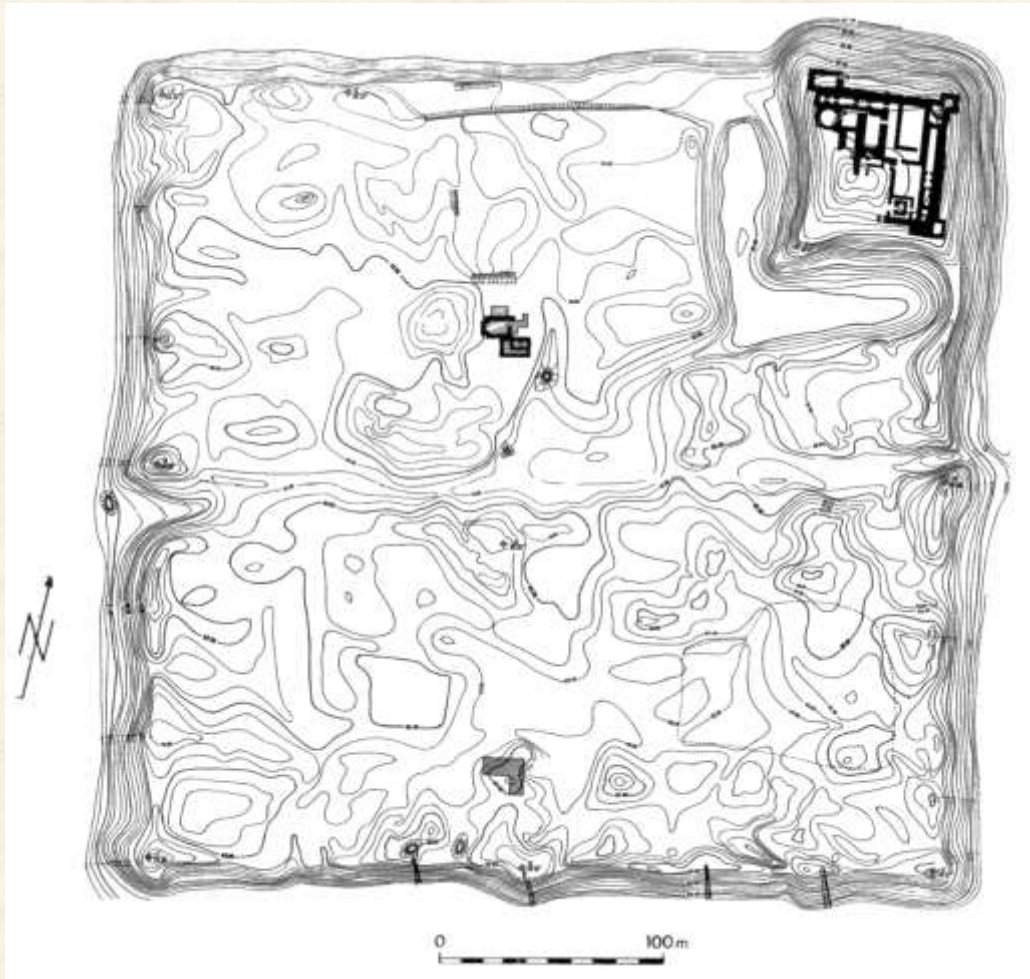
Tobrak Qale built by Artav/ Artabanos, ruler of Khwarezm, in the 2nd century CE



Dalverzin Tepe



Zar Tepe



Kafyr Kala

